

THIS INSTRUMENT PREPARED BY  
 DAVID P. LINDLEY  
 OF  
**CAULFIELD and WHEELER, INC.**  
 SURVEYORS - ENGINEERS - PLANNERS  
 7900 GLADES ROAD, SUITE 100  
 BOCA RATON, FLORIDA 33434 - (561)392-1991

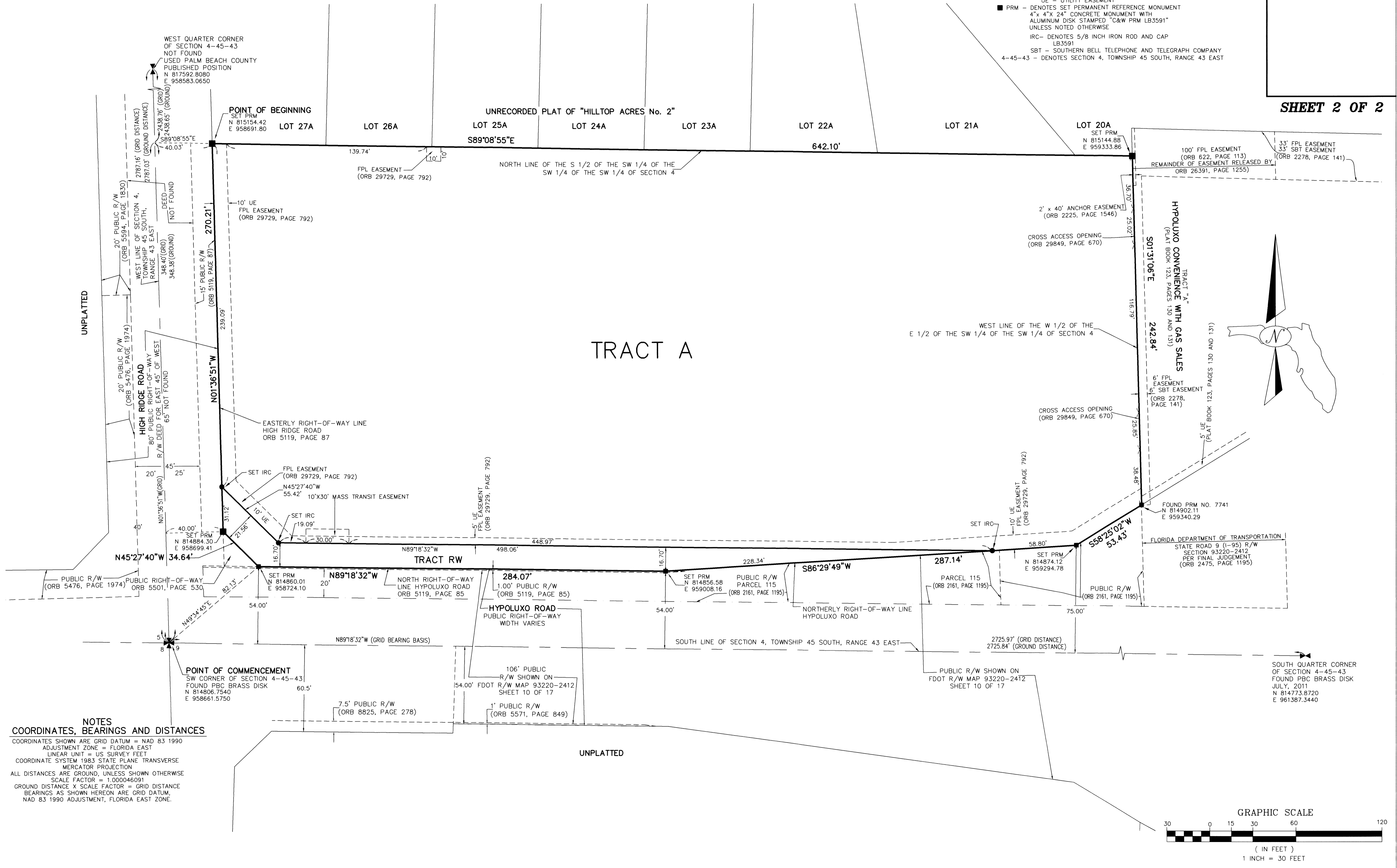
# HYPOLUXO SHOPPES

AN M.U.P.D.  
 A PORTION OF THE SOUTHWEST ONE-QUARTER OF SECTION 4, TOWNSHIP 45 SOUTH,  
 RANGE 43 EAST, PALM BEACH COUNTY, FLORIDA

**LEGEND/ABBREVIATIONS**  
 Δ - DELTA (CENTRAL ANGLE)  
 E - EASTING  
 FPL - FLORIDA POWER AND LIGHT  
 FDOT - FLORIDA DEPARTMENT OF TRANSPORTATION  
 L - ARC LENGTH  
 LB - LICENSED BUSINESS  
 M.U.P.D. - MULTIPLE USE PLANNED DEVELOPMENT  
 N - NORTHING  
 ORB - OFFICIAL RECORD BOOK  
 PBC - PALM BEACH COUNTY  
 R - RADIUS  
 R/W - RIGHT-OF-WAY  
 UE - UTILITY EASEMENT  
 ■ PRM - DENOTES SET PERMANENT REFERENCE MONUMENT  
 4" x 4" x 24" CONCRETE MONUMENT WITH ALUMINUM DISK STAMPED "C&W PRM LB3591" UNLESS NOTED OTHERWISE  
 IRC - DENOTES 5/8 INCH IRON ROD AND CAP LB3591  
 SBT - SOUTHERN BELL TELEPHONE AND TELEGRAPH COMPANY  
 4-45-43 - DENOTES SECTION 4, TOWNSHIP 45 SOUTH, RANGE 43 EAST

27

SHEET 2 OF 2



**NOTES**  
**COORDINATES, BEARINGS AND DISTANCES**  
 COORDINATES SHOWN ARE GRID DATUM = NAD 83 1990  
 ADJUSTMENT ZONE = FLORIDA EAST  
 LINEAR UNIT = US SURVEY FEET  
 COORDINATE SYSTEM 1983 STATE PLANE TRANSVERSE  
 MERCATOR PROJECTION  
 ALL DISTANCES ARE GROUND, UNLESS SHOWN OTHERWISE  
 SCALE FACTOR = 1.000046091  
 GROUND DISTANCE X SCALE FACTOR = GRID DISTANCE  
 BEARINGS AS SHOWN HEREON ARE GRID DATUM,  
 NAD 83 1990 ADJUSTMENT, FLORIDA EAST ZONE.

